

invar 



IWS Invar Warehousing Software



THE WAREHOUSING MARKETPLACE HAS SHIFTED

Automation in the warehouse isn't just an optional extra or a useful high grade advantage anymore. In the 2020s and beyond, automated warehouses are the competitive baseline.

To be competitive, you not only need automation, it needs to be functioning at the highest performance possible.

That means you need the best in overarching operational support. Something streamlined and simple, clear and comprehensive, and with efficiency built into every facet of its engineering.

Something that combines all of the following:

- ✓ Inventive workflow setup.
- ✓ Industrial win-state.
- ✓ Immeasurably worthwhile strategy.
- ✓ An intelligent warehousing solution.

This is all IWS could mean for your business, and all things you will experience when you use Invar Warehousing Software.

When it comes to your next choice, you have two options:

A FUTURE WHERE YOU SEE WHAT YOUR BUSINESS CAN REALLY ACHIEVE USING IWS

OR

A FUTURE WHERE YOU CHASE DOWN YOUR COMPETITORS AND THEIR IWS-FUELLED ACCOMPLISHMENTS.



IWS OPERATIONAL FUNCTIONALITY

IWS has all the capacities you could possibly need to get your business moving faster, working better, and delivering greater accuracy than ever before.

The Invar Group's central passion is **"to get things moving efficiently"**. IWS is the purest digital expression of that purpose.



IWS works in real time



IWS offers waveless picking



IWS can direct storage rules



IWS controls warehouse automation hardware



IWS is supported globally



IWS uses rules-based dynamic algorithms



IWS features work order and kitting abilities



IWS integrates with couriers for last-mile operations



IWS has GOALS - Grouped Ordering Algorithmic Logistics Systems



IWS delivers customisable reports/dashboarding/visualisations



IWS grants you complete stock traceability/inventory control

WHAT IS IWS?

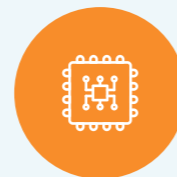
IWS is software suite that is a combination of three key forms of logistical functionality. In IWS you receive a blend of the following three key elements:



WMS
Warehouse Management Software



WCS
Warehouse Control Software



WES
Warehouse Execution Software

Understanding these three is just the beginning. Limiting IWS to these categories would be to describe gold as mere metal, Bill Gates as but a businessman, or cars as common conveyance. It's true, nothing but true, but far from the whole truth.

IWS has copious capacities, characteristics, and calibrations that carry it beyond the workaday category of WMS that generic vendors or off-the-shelf automation agents will deliver.

IWS delivers a bespoke and built-to-order turnkey solution, bringing your business exactly the system and support needed to solve your particular problems and most immediate issues.

What is bespoke software?

Bespoke software is built for needs and requirements. There is no need to modify existing software or rework pre-existing elements. Bespoke systems consist of tools tailored for specific situations.

What is a turnkey solution?

Turnkey solutions are products or services that are complete and ready for immediate use upon implementation.

IWS has copious capacities, characteristics, and calibrations that make it move far and above the kind of WMS that generic vendors or off-the-shelf automates can deliver.



IWS OVERALL FORMAT

IWS is unique in both the level of power and advantage it provides, and also the specific configuration each user receives. It delivers the complete package to each and every possible arrangement of warehouse-utilising business, regardless of size, structure, or overall situational set-up. By understanding all the elements below, read on in the following chapters.

- ✓ IWS is comprehensive
- ✓ IWS is modular
- ✓ IWS can stand-alone AND/OR integrate
- ✓ IWS is continually updated
- ✓ IWS is multi-lingual

IWS ORGANISATIONAL FEATURES

To understand why you need IWS, you need to understand the fundamental principles the system is built on, and the advantages these offer. When your business takes advantage of such things, prosperity will naturally follow

- ✓ IWS is intuitive
- ✓ IWS is configurable
- ✓ IWS is scalable

IWS delivers the complete package to each and every possible arrangement of warehouse-utilising business, regardless of size, structure, or overall situational set-up.



IWS WORKS IN REAL TIME

The pace of the modern warehouse operational environment is unrelenting.

The danger of losing customers due to mistakes, delays, delays caused by mistakes, or any combinations thereof, is both ever present and evermore unforgiving. This is why IWS offers you real-time solutions and present-moment awareness to ensure that your business can and does operate both without operational error and without situational misinformation.

By connecting as many of your operational processes as possible, IWS delivers a full and comprehensive understanding of your business' activities in real-time. This extends to everything from integration with accounts and marketing outreach systems via our ability to connect with your ERP provisions, to granular and specific information about the position of particular SKUs as they are moved through automated apparatus.

Real-time handling of every component/product/item gives you a comprehensive picture of your business operations at any selected moment. We design intuitive and highly informative user-interfaces to keep you fully abreast of every change, conundrum, confounding element, and upcoming challenge you might ever possibly need to know about.

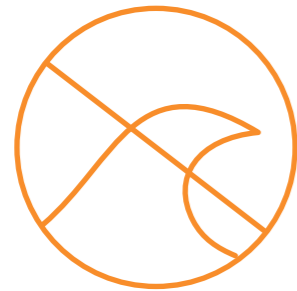
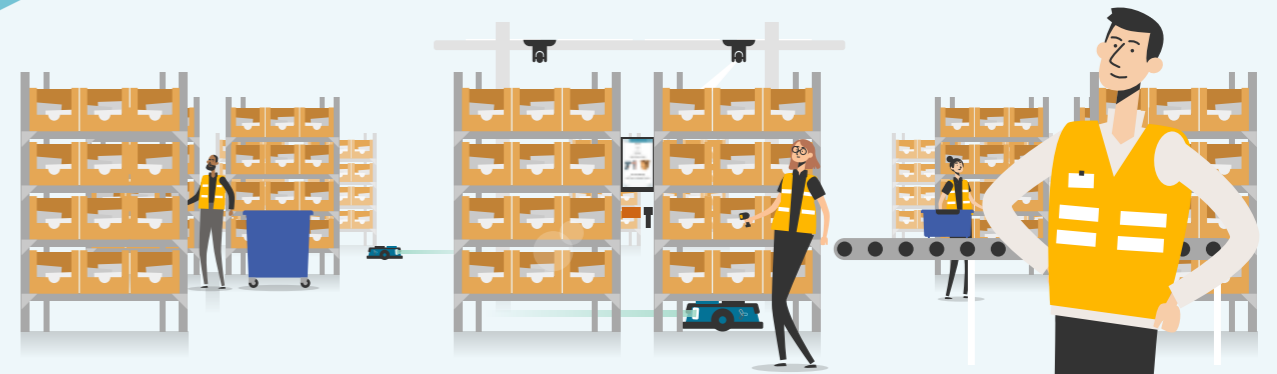
This real-time understanding also keeps your clients in the loop at every stage you might want them informed. Whether that's telling them where their orders are in the stage of shipping, to keeping them updated on your ability to continue manufacturing specific components, or avoiding the dreaded unexpected "stock out" notification, real-time operations keep your warehouse in pole position when it comes to provision of priorities.

Real time handling of every component allows for you to have a complete and comprehensive picture of your business operations, at any given time.

IWS SUPPORTS WAVELESS PICKING

Warehouses need to be able to move goods in the fastest possible way at every stage of fulfilment. To accomplish this in the best way, there are many different technological means that can assist you. These include handheld terminals, voice command arrangements, pick to light systems, autonomous mobile robots, and many more besides. IWS can control and co-ordinate all of these, but what is much more important is its ability to process using ultra-efficient underlying methods. That is why IWS supports waveless picking.

Waveless picking means that picking order and arrangements can be adjusted throughout the day. Rather than waved picking, where orders come in, a picking wave is arranged, and then sent out, waveless picking works by using advanced algorithms to process what is being picked and when, in real-time.



Waveless picking means that the order and arrangement of what is being picked and when can change at any moment throughout the day.

The advantages of this approach are numerous, but the three biggest are as follows:



HIGHER PRODUCTIVITY - Waveless picking removes the slowdown time caused as one wave completes and the next is released. Instead, picking staff receive continuous work content, without waiting for more orders to come later.



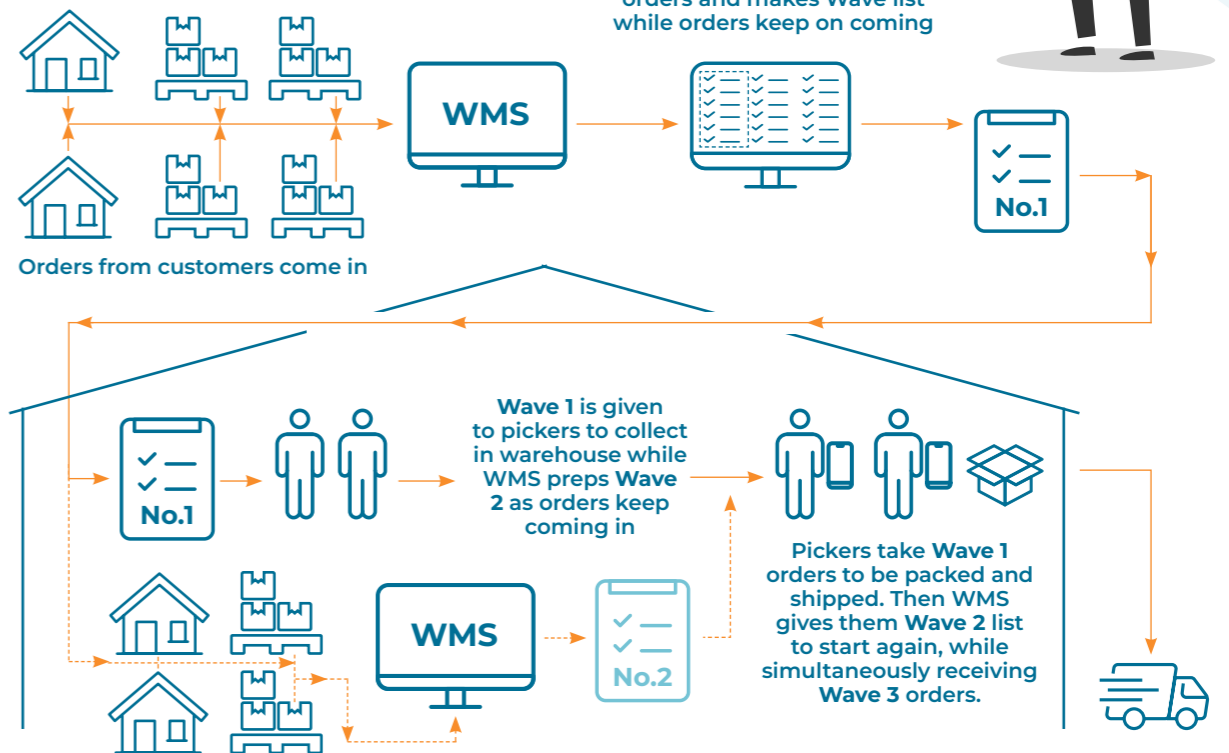
ACCELERATED THROUGHPUT - Better productivity and consistent work release and distribution increases throughput and results in more efficient allocation of workers and equipment.



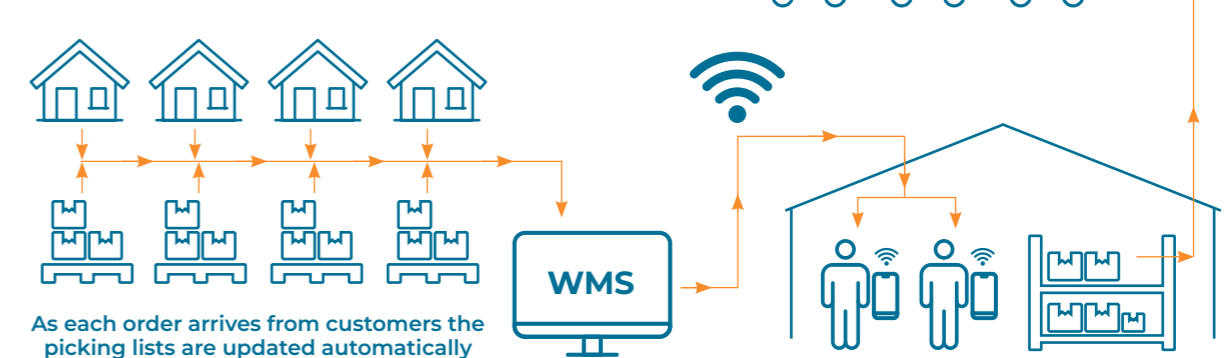
REDUCED TURNAROUND TIMES - Orders can be prioritised and arranged as they arrive. This sorts things like rushed orders far sooner. Options such as next-day and two-day delivery become more readily available and more reliably accurate.

With waveless picking delivered by IWS, your warehouse can work faster and more consistently than ever before. For something like this to function, you need comprehensive and complete computer control and co-ordination system.

WAVEBASED



WAVELESS





The specifics of the rules-based algorithms we use allow for a dynamic approach to the fulfilment process. This means that at every step the overall architecture of IWS software is aware of each individual process.



IWS USES RULES-BASED DYNAMIC ALGORITHMS



It is often said that rules are made to be broken. For warehouse utilising businesses, one rule that never changes is the need to stay ahead of priorities. Keeping the most important clients happy, getting the most popular goods out the door, moving product to specific locations at specific times in specific circumstances. All this and more can constitute the most important priorities for your business in any given situation. But with a situation that can change as rapidly as the marketplace of the 2020s, what rule-set can you realistically count on to keep your business ahead of the game? What is needed is a flexible, changeable, adaptive approach to warehouse operations. That is why IWS uses rules-based dynamic algorithms.

IWS employs rules-based algorithms that can be conditioned and adapted to your business's particular and specialised needs. We design an elaborate set of If-Then chains and sequences that allow your software to select, organise, and prioritise how the fulfilment process is managed in any given moment.

Dynamic rules-based systems are highly advantageous in contrast to their counterpart of machine learning. While ML operates using a "black box" of impenetrable internal logic that can only be pre-built with a pre-existing vast quantity of data to learn from, dynamic rules-based systems let your business select and specialise how you want your software to manage your warehouse.

However, this does not mean that the systems IWS installs are rigid and inflexible. The specifics of the rules-based algorithms we use allow for a dynamic approach to the fulfilment process. This means that at every step the overall architecture of IWS software is aware of each individual process. This holistic examination allows the software to decide if a given set of processes is indirectly contradicting larger goals relating to efficiency or expediency, even if all the boxes of the individual processes were ticked off correctly.

The advantages of this are many, varied, and advanced to say the least:



Real-time adaptation

Because IWS can see the orders as they come in, the rules based system can detect in advance if a particular set of conditions has been reached, and readjust which set of rules you need to work with on the fly, keeping your operations at peak performance.



Complete awareness

Since IWS can understand the plethora of particular KPIs your business deems most important to know, the rules can be changed and adjusted with those in mind. Because the data from these is always within IWS's reach, it can respond automatically, without manual management.



Creative adjustments

IWS can be engineered to react creatively to different combinations of circumstances, allowing for your business to keep pace in ways others may not consider, without time consuming and complicated manual reconfiguration. *Examples of what this could mean in practical terms are many, various, and always advantageous.*



Glut orders

In situations with large numbers of orders of single items, a rule could be triggered that would pause picking of other orders to speed through the more efficient processing of a single type of selection.



Predictive purchasing

High volumes of one order that typically result in further specific goods being purchased could trigger warnings and reorganisations accordingly.



Client concentration

When particular clients begin ordering en masse, more focus on the goods they need, and the services thereby associated can be arranged.



Task redirection

When one type of task becomes less urgent, frequent, or otherwise presently necessary, IWS can assign other tasks to be performed instead to prepare for future possibilities. Should a lull in orders arise, stock can be reorganised, replenished, or rearranged as needed. The rules can detect when certain activities are slowing and what should be done instead with the valuable reclaimed time.

By allowing for a dynamic component into the rules based systems of the algorithm, you create a warehouse operational situation that can adapt and accelerate as needed. Something that does not stay strictly into a specific system, yet can be trusted to not produce random unintelligible outputs often associated with pure machine learning.

With a rules-based dynamic algorithmic model, you can trust your fulfilment processes will be responsive, reliable, and ready when most needed.

IWS DELIVERS CUSTOMISABLE REPORTS/DASHBOARDING/VISUALISATIONS



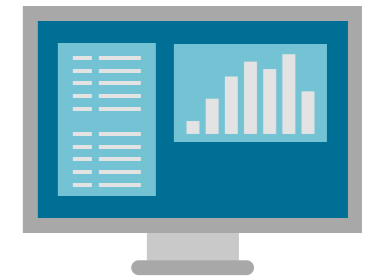
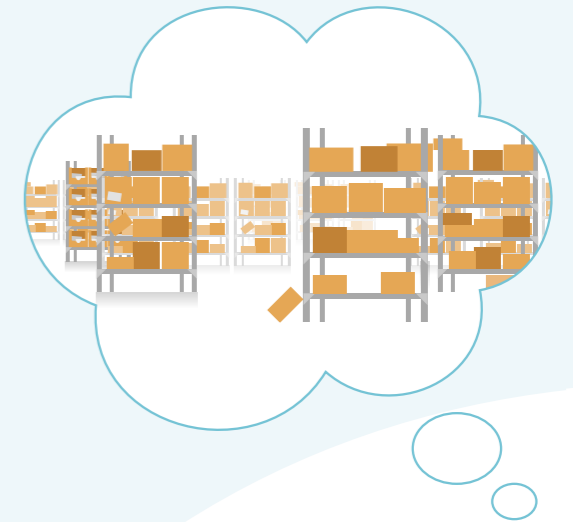
When looking for software that supports an understanding of your overall business operations, you'll naturally have certain requirements.

Said software will need to be comprehensive. You will want a means by which all your operational data can be gathered in one place, processed through a unified system, and output onto a single streamlined screen interface. Something where you can be confident you can reach everything from one place.

This software will also need configurability. Different businesses require varying levels of focus on specific sections and sub-sections of overall operations. While a B2C outfit might want more assurance of extreme speed of delivery at every stage, a B2B outfit might want to know more about the average cost/mass/weight of each day's overall orders. Whatever statistics and KPIs are most important in your sector, these are the indicators that must be put front, centre, and clear on your specific business visualisation screen.

You will also expect clear communicability from said software. Something that can be shown, seen, and understood implicitly by a wide variety of audiences within your business. Overall understanding should not be something that is limited to those in a technical field. It should be as communicable and clear as possible, something available for anyone who needs to know.

IWS delivers all these features and more. Your business can make use of any number of our wide selection of KPI visualisations, data infographic animations, reports systems, or any number of other tools for your comprehensive, configurable, and communicably clear business understanding. For your business to make the most of every opportunity, you need the best possible understanding of where you currently find yourself.



IWS GRANTS YOU COMPLETE STOCK TRACEABILITY/INVENTORY CONTROL

Stock outs are a menace that every business desperately wants and needs to avoid. Such a notification sent to any potential client can demolish whatever reputational credit you might have built up. The idea that you cannot keep track of what is kept in your own warehouse is shocking to anyone on the other end of the transaction. It is above and beyond paramount that this cannot be allowed to happen.

Comprehensive awareness of your stock is not only the first line of defence against stock outs. It also enables you to plan warehouse operations with maximum possible efficiency. Knowing exactly where every item is, how much of each item remains, and how long it has been in storage for, enables calculations of efficiencies, protocols, and optimum operational processes.

IWS offers any number of routes to comprehensive stock awareness. We can include and monitor every possible form of information, variation, and registration of all your items. From basic and expected facets such as size, weight, name, colour etc, all the way to the more esoteric and specific information such as overall classification, value of complete item, value of components, component batch information, serial coding, previous shipping history, origin points, and much more.

Whatever you need to know about your goods, and however you need to access it, IWS can help. Whether you want information delivered over handheld terminals, advanced desktop options, tablet systems, or anything else you might need. IWS can deliver complete and fully co-ordinated control of your stock.

For your business to make the most of every opportunity, you need the best possible understanding of where you currently find yourself.



IWS FEATURES WORKS ORDER AND KITTING ABILITIES

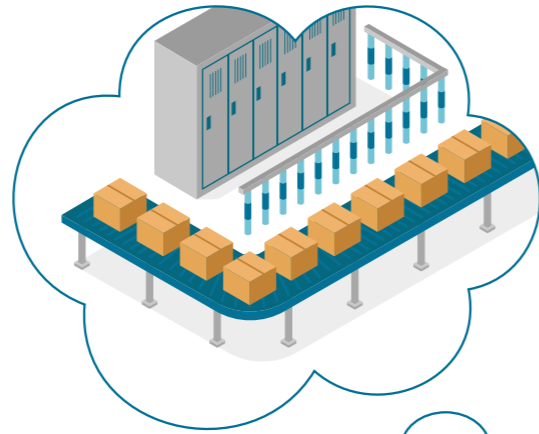
Warehousing is a means to many different ends. Sales, storage, and shipping are the most obvious, but they can also be a stepping stone on the road of assembly, manufacture, maintenance, and many other such processes. These systems benefit greatly from overarching computer control and co-ordination in much the same way that logistics benefit from a well-designed WMS. This is what IWS can offer to you and your business.

IWS supports many options within the broader scope of kitting and work order abilities. This can be done as part of a digital hand-held terminal based system, where work orders can be delivered digitally to any number of screens and stations across your facility. Alternatively, it can be conducted in a more manual fashion, using paper-based systems or even voice command directives, to arrange and assemble work orders as needed during specific processes.

While the W used in both IWS and WMS/WCS/WES stands for "warehouse" the simple moving and storing of goods is not the limit of what IWS is capable of. Key components of manufacturing operations are processes that IWS can offer, should your business require them. The adaptive and overarching nature of IWS's abilities allows increased efficiency in every area, regardless of what you need and how you need it done.



IWS supports a wide variety of options when it comes to kitting and work order abilities.



IWS CAN DIRECT STORAGE RULES

Across the warehousing and logistics sector, practical differences, operational distinctions, and commercial variations will always abound. The specific arrangements and requirements of any given warehouse include a huge range of possible procedures and necessities. The following list is just a small sample of what many might need in this regard:

- **Quarantine controls** – items to be placed in specific positions and undisturbed for a specific period to avoid wider contamination with the rest of the inventory.
- **Temperature considerations** – items to be held in temperature controlled environments so as to prevent spoilage or disintegration.
- **Moisture monitoring** – items to be stored in environments where overall humidity and moisture concentration levels are carefully monitored.
- **Static-discharge-shielding** – items contained in areas where specific materials are prohibited due to possible damage caused by static electric build up.
- **Sterile storage** – items contained here must be hermetically sealed due to possible contamination.

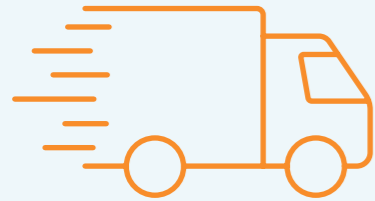
These options might seem individually simple enough by themselves, but become much more complicated when considered in conjunction with one another, alongside a wider body of "normal" storage. Furthermore, there are many other possible variations of storage rules and conditions that many warehouses have to consider.

- **Proximity problems** – Specific items cannot be stored near certain other items.
- **Elevation edicts** – Certain items cannot be stored above/below certain others.
- **Fragility factors** – Items needing special considerations of breakability must be stored in specific areas/ways to keep them safe.
- **Expiration exceptions** – Items cannot be stored in a "normal" environment for over a certain length of time and must be periodically moved to other environments or removed entirely.

The idea of manually managing all these, alongside any number of other safety, security, and other situation specific requirements, borders the realm of the absurd. The need to automatically handle all of these seems almost axiomatic. That is where IWS steps in.

IWS delivers optimal adherence to every manner of warehouse storage ruling you could possibly need. You can work with complete confidence in automatically accurate control and co-ordination. Every last movement staying in line with every rule, regulation, requirement, and reasoning that you could possibly need in your particular sector of your specific industry.



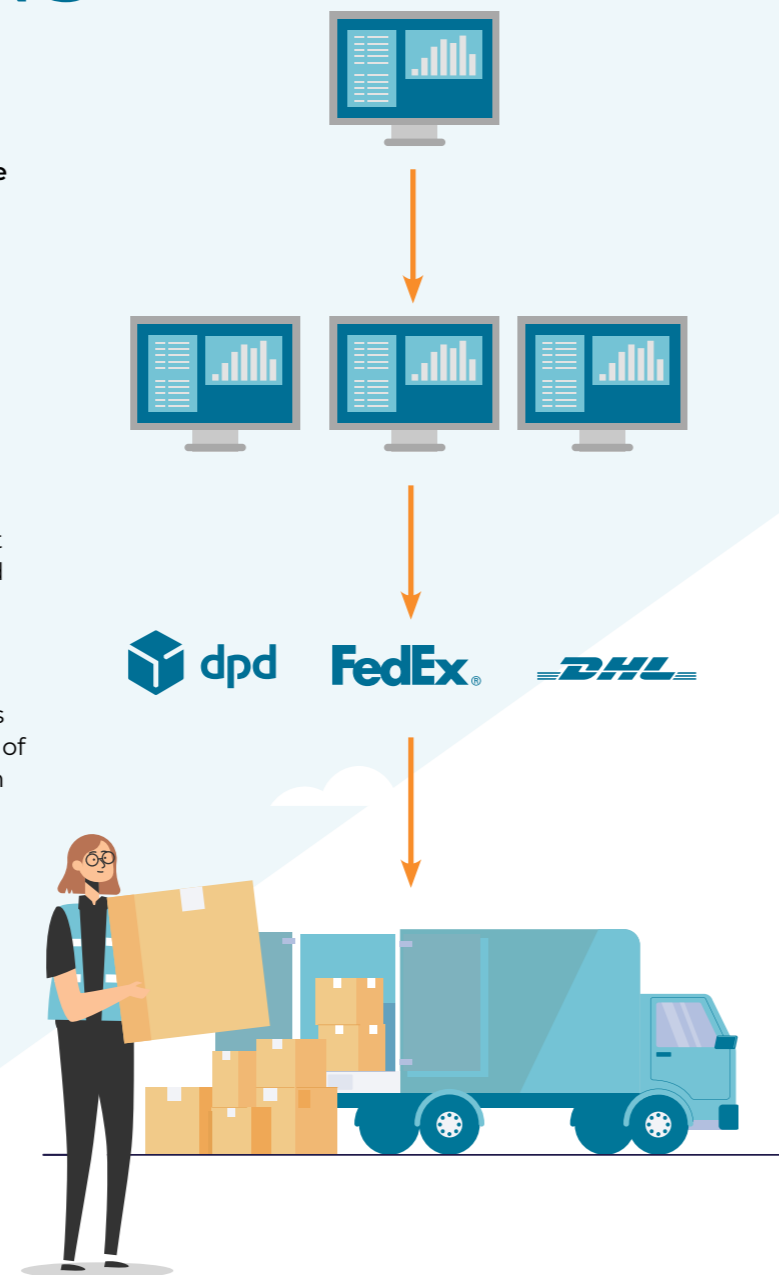


IWS INTEGRATES WITH COURIERS FOR LAST-MILE OPERATIONS

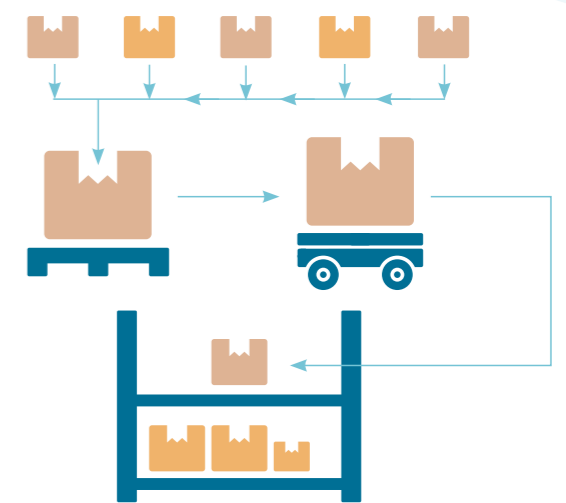
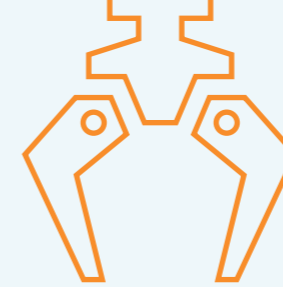
There is a frustrating but futile-to-ignore fact of all logistics operations (as well as many other fields of human endeavour). The final 10-20% of a task consumes a disproportionate body of effort, energy, and expenditure, especially when compared to the previous 80-90%.

This is the last mile problem, an indelible feature of everything from mass ecommerce delivery of consumer goods to specialised support of medical supply chains. Whatever you are moving, however you make it move, wherever and whenever you are moving it, the data continuously shows that the final step is often the most arduous. This is something that your warehouse management software should appreciate, anticipate, and actively act against as a matter of material importance.

IWS offers complete and fully coherent integration with any and all manner of couriers you could choose to use. This enables the kind of tracking, traceability, and tactical co-ordination that gives you the best possible advantage when faced with the difficulties of last-mile operations. By ensuring you and your couriers are acting with singular purpose and sharing as much information as possible, you can do everything humanly and digitally possible to ensure your goods go where you want them, when you need them to.



IWS HAS GOALS – GROUPED ORDERING ALGORITHMIC LOGISTICS SYSTEMS



Maximum possible efficiency is the goal of any warehouse utilising business. Whatever the commercial sector, whatever country you are based in, whether you work in B2B or B2C spaces, the ultimate aim, to deliver the most completed tasks in the minimum possible time, is always the same. To ensure your business scores here, IWS has the GOALS you need. Grouped Ordering Algorithmic Logistics Systems.

GOALS allows orders to be amalgamated in ways that maximise speed and efficiency. Rather than simply processing orders as they arrive, or according to other non-efficiency based simplistic systems. GOALS collects orders together when several of the same items can be found in the same area of a warehouse, or if a several orders all have large numbers of a single specific item, or if there are any number of other synergies and efficiencies to be found in grouping and reorienting the order in which the picking is processed.

This process is in part achieved via an advanced array of algorithmic logic and carefully directed machine-based learning systems. With software that understands the full shape of the ordering process, individual orders can be sorted both in the context of every other and the arrangement of the wider warehouse. A radically improved alternative to orders simply being stacked and streamed in the sequence they arrived in.

GOALS means that the number of individual movements to complete a wide array of fulfilment processes is dramatically minimised. Not only is this faster, it also shrinks the need for individual intervention and manual management. This limits the possibility of item misplacement, document mistakes, and many other forms of manual error. With GOALS, your business can score highly in every metric that matters. Your orders can be gathered intelligently, your fulfilment will happen faster, and all your achievements will feature maximum possible accuracy.

IWS CONTROLS WAREHOUSE AUTOMATION HARDWARE



Warehouses have vast arrays of options, alternatives, and arrangements when it comes to automation. It can depend on space available, desired speed, product size, storage solution, specific conditions needed, and many other variables that could affect overall outcome. But one thing all these different kinds of automation options need is control.

There is no benefit to an array of automation technology that is not controlled and coordinated effectively from a single source. Without an overarching and unified computer command structure, you create a fractal mess of adjoining operations and detached processes that can't make sense of themselves in any kind of broader context. While such systems can work effectively alongside one another, to keep them in line will require substantial human man hours of work and worry. Man hours that have the potential to be riddled with error and distraction-based mistakes.

What IWS offers is a singular harmonised alternative. A complete overarching control system that not only ensures an absence of distraction and error in your warehouse operations. It also means that every part of your automation process is in communication, contact, and coordination with every other part. Each system knows how it relates to all the others, allowing it to work together effectively.

Because of the IWS bespoke turnkey solution nature, this control can be extended to any and every kind of automation technology you could possibly think of. This includes, but is not limited to:

- **Conveyor belts**
- **Bomb bay sorters**
- **Autonomous Mobile Robots (AMRs)**
- **Automated Guided Vehicles (AGVs)**
- **Automated forklift units**
- **Rail mounted robotic systems**
- **Shuttle systems**
- **Vertical lift systems**
- **Pick to light systems**
- **Handheld terminal interfaces**
- **Vertical and horizontal carousel systems**

With IWS understanding all of these in the context of all the others, your business can be sure that each part of the system is integrated and informed about the workings of the complete operation. You can get the most possible efficiency with the minimum possible manual management.

IWS bespoke turnkey solution nature, this control can be extended to any and every kind of automation technology you could possibly think of.

IWS IS COMPREHENSIVE

com-pre-hen-sive – Adjective – including or dealing with all or nearly all elements or aspects of something: “a comprehensive list of sources”



IWS provides the full range of features that any business could need to automate as part of efficient warehouse operations.

This includes (but is not limited to) advanced software for the control, co-ordination, and completion of tasks related to all of the following:

- ✓ **Dispatch**
- ✓ **Inventory management**
- ✓ **Goods in**
- ✓ **Waveless picking**
- ✓ **Putaway/slotting**
- ✓ **Replenishment/reallocation**
- ✓ **Picking planning**
- ✓ **Document printing**
- ✓ **Packing**
- ✓ **Value Added Services**
- ✓ **Carrier/Courier integration**

By offering all the different possible functions of a warehouse in a single software solution, IWS allows everything to work faster. Connections between things such as document printing and courier integration need no longer involve manual processes. The information can be connected by one software network that speaks the same language to all its constituent parts.

This removes many different points of manual management, making your whole warehouse far more effective and efficient in several key ways.

Removing manual management means manual error is removed from the equation. You no longer need worry about distraction based problems.

You also eliminate the problem of inter-system miscommunication. With a comprehensive system every part of the warehouse can speak in an instant digital language that every other part understands.

This makes your wider warehouse more effective by redirecting valuable staff hours to the spaces where they are both most indispensable and most impactful.

IWS allows you to have a complete and absolute control and co-ordination set up for every possible part of your warehouse's solution.

modu-lar – adjective - employing or involving a module or modules as the basis of design or construction.

IWS IS MODULAR

mod-ule – noun – 1. each of a set of standardized parts or independent units that can be used to construct a more complex structure, such as an item of furniture or a building. 2. any of a number of distinct but interrelated units from which a program may be built up or into which a complex activity may be analysed: 3. a detachable self-contained unit of a spacecraft

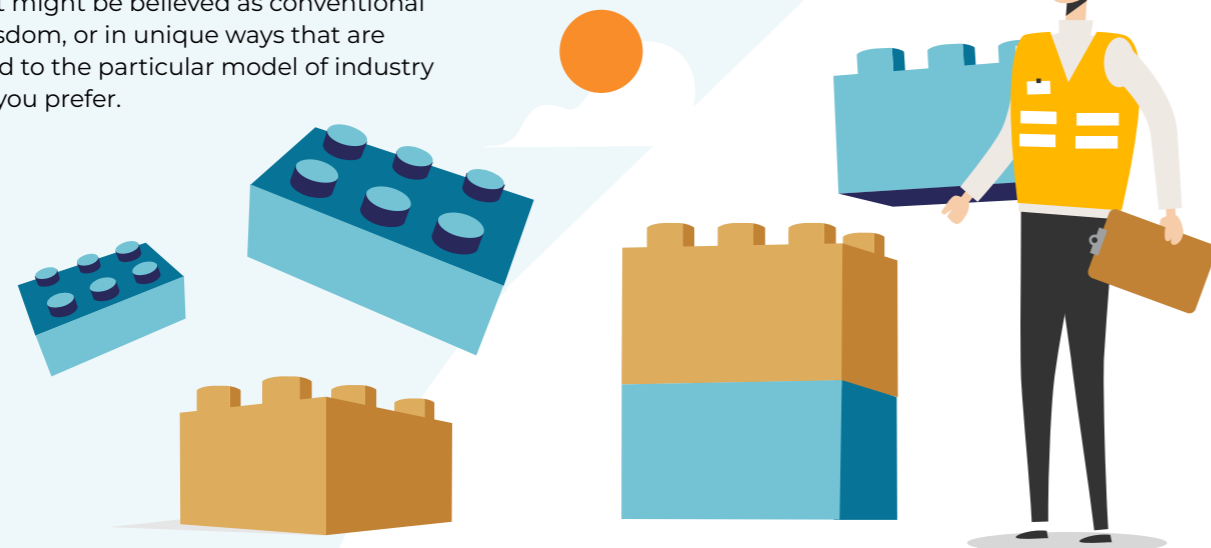
As is well established, the functionality levels of IWS are vast and varied. While every business that uses it will experience something similar in terms of improved efficiency, reduced error rates, and overall improvements in the most important KPIs, the exact way this will be accomplished will vary wildly from business to business.

This is because IWS is not a single package of programs, but instead a modular suite of software utilities. These can be interconnected in a host of specific and varied ways, either that model what might be believed as conventional industry wisdom, or in unique ways that are better suited to the particular model of industry operations you prefer.

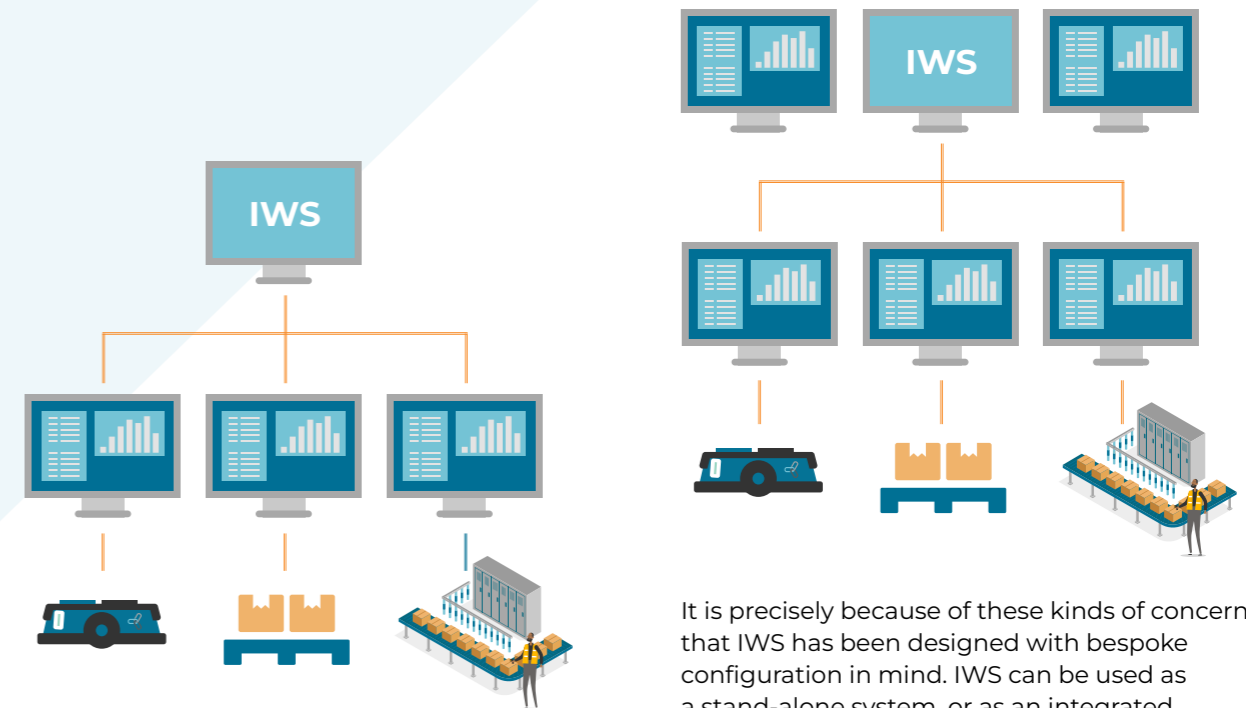
The pre-designed modularity of the software means you do not have to worry about points of contact being complicated, or inter-system joins as areas of possible error. While every area has its own function, all the software speaks the same language.

This means that not only is your software configurable upon order, but it can also be configured and reconfigured at later dates should your business grow or change to the point where different functionality or new arrangements are required. Your courier integration might need an added CRM functionality component, or your goods-in command-and-control may now want to be integrated into an RCS that co-ordinates a fleet of AMRs

However you want to arrange the suite of software systems at your command, the modularity offered by IWS means your workplace will always stay in a secure orbit.



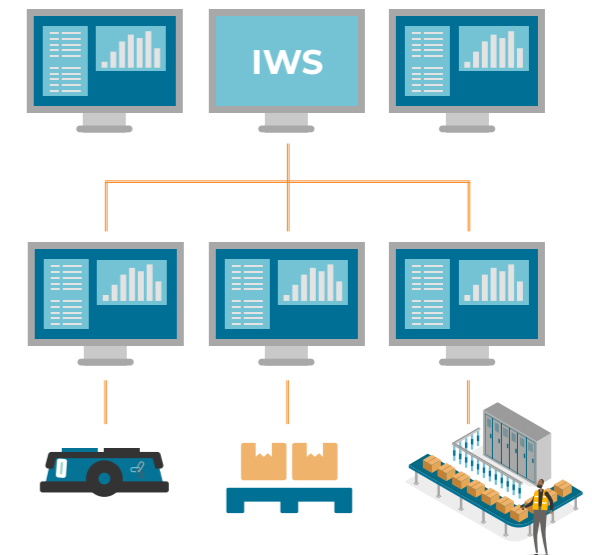
IWS CAN STAND-ALONE AND/OR INTEGRATE



Either integrated or standing alone, IWS can function to deliver you the very best in operational efficiency.

The introduction of new software into any business carries with it the worrying possibility of significant disruption. A new set of procedures, a different array of processes, and an entire suite of less-than-familiar interfaces. All these things and more carry with them the perceived risk of difficult teething processes, no matter how effective the software itself might be.

This gets dramatically amplified when you consider the possibility of old and new software needing to interact. The risks of issues like system conflicts, data mismanagement, or classic communication breakdowns due to integrational incompatibility are not safely ignored.



It is precisely because of these kinds of concerns that IWS has been designed with bespoke configuration in mind. IWS can be used as a stand-alone system, or as an integrated component within a wider pre-existing warehouse operational framework.

Because we at the Invar Group deliver turnkey solutions, the idea of simply delivering you a set of CDs/hard drives/data portals and telling you to go away and install things yourself is utterly anathema to our Modus Operandi. Instead, our teams work alongside your business to discover how best IWS would fit into your needs and your specific set of business situations.

If you are best served by IWS providing – for example – a stand alone picking solution, that can be arranged. The information can be transferred in whatever manual/automatic system your business needs, and IWS can offer that service specifically with the limited use of one of its modular components.

If on the other hand, you require IWS to manage your goods in, item quarantine system, and a pick to light array, while your pre-built courier integration apparatus works best for your particular industrial needs, IWS can be adapted accordingly.

Either integrated or standing alone, IWS can function to deliver you the very best in operational efficiency.



IWS IS CONTINUUALLY SUPPORTED/UPDATED

The warehousing and logistics market is never a static place. Movement of goods runs in parallel with shifts in practices, technology, industries, and many other areas that can result in needs to change and reorganise at any moment.

This is one of the many reasons IWS is a system that undergoes continuous and ongoing updates and support. We at the Invar Group ensure that your software not only meets the essential standards of total security and optimum possible uptime. We also work hard to create a software base that incorporates every new move of the market, as and when you need anything to be organised differently to your previous plans.

Our teams of engineers, experts, and entrepreneurial minded operatives are constantly seeking the very best ways for your business to be improved by our software. That's why we work to build updated versions as often as possible, as well as correcting any of the rarely occurring problems you might find yourself dealing with. Our mission to get you moving efficiently is always the top priority.

IWS IS MULTI-LINGUAL



The complete and utter configurability, adaptability, flexibility, and bespoke nature of IWS means that there is no barrier to any change you might like to make. Communication is naturally a key component of this process, one that the Invar Group has worked to ensure is not bound by any manner of language boundary.

Wherever and however you use IWS, you can be completely assured that it will deliver readouts and readings in every language you could ever want, need, or dream of. IWS is the product of an internationally operating network of technicians, developers, designers, and engineers. We understand the need for complete and utter clarity of language at every stage of your operation. Whether you are pushing produce in Poland, vehicle parts in Venezuela, or combustibles in China, we make sure that you, your customers/clients, and your crucial associates, are all speaking in a way that can be comprehended and consolidated into your warehouse management software.

With IWS, you can be completely assured that it will deliver readouts and readings in every language you could ever want, need, or dream of.



IWS IS INTUITIVE

IWS is a system that understands what you and your business needs. We have developed an array of user interface options that go beyond just maximising understanding and capturing clarity. We also deliver our system with your particular KPIs and business goals in mind. We ensure that you can intuitively understand every step of your logistics process that our software supports.

With the intuitiveness of IWS, every member of your team can have an obvious, comprehensive, and actionable understanding of the overall state of your business operations. You do not have to be concerned or confused about any aspect of what your warehouse is doing. You can understand and identify where your operations are overachieving, where stability is successful, and where improvements are imperative.

IWS IS CONFIGURABLE

The modularity and integration-based options intrinsic to IWS's design means that IWS is highly configurable. Whatever specific set of needs, goals, or challenges you face in your sector and/or situation, IWS can deliver a logistical improvement solution that addresses each and every aspect of your situation.

Because of the modularity, and the code's adaptability to be integrated with any number of pre-existing software arrangements, IWS can be configured to conform with any manner of business set up or warehouse management arrangement you can imagine. We deliver complete turnkey solutions, which means when we're done it is just a matter of telling the system to start.

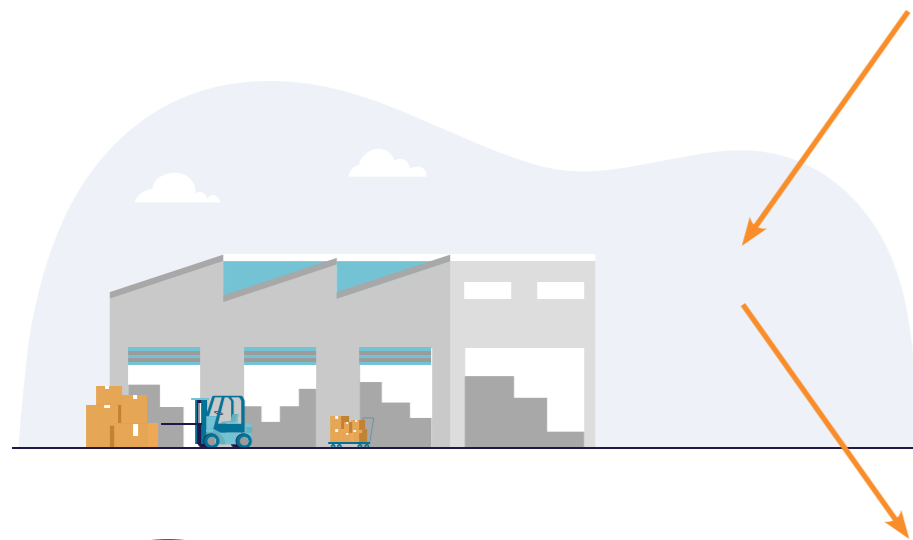
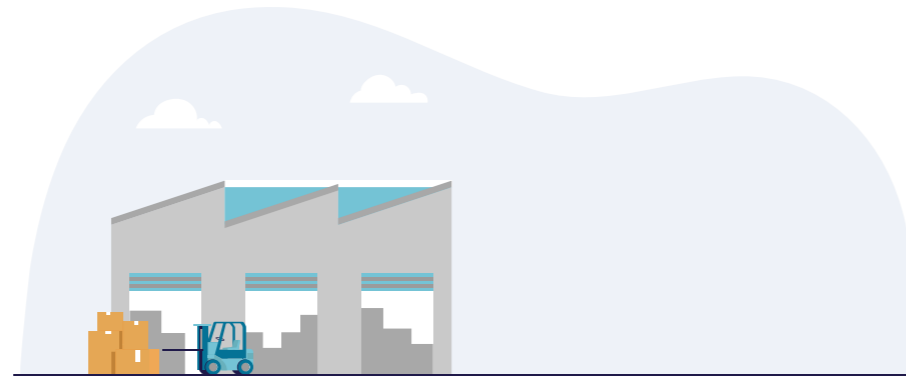
IWS can be configured to conform with any manner of business set up or warehouse management arrangement you can imagine.



IWS IS SCALABLE

Very few businesses are planning to stay at their current size for the long term. Fewer still are specifically planning to shrink. IWS as a software system is designed to be scalable and adaptable as more warehouses come online, different equipment is installed, or different parties get involved in the wider business process.

IWS can be expanded and reformed or adapted for new warehouses, different business practices, faster production or fulfilment cycles, and many other different options when it comes to best practices for what your business needs when it scales. IWS grows with your business, and can keep pace with whatever realities your marketplace can throw at you.



This is what IWS offers your business.





Invar Group
Building 5, Caldecotte Lake Business Park,
Milton Keynes, MK7 8LE

invargroup.com | 01234 436000